



MODEL:202006C

W6.1XL6.05XH1.8M

INSTALLATION

INSTRUCTIONS



Installation Instructions

Congratulations on your purchase of our instant shelter. This unit is a combination of excellent manufacturing and design. It is comprised of a rigid frame and a durable cover. For easy assembly, we have marked all the parts with codes, with proper installation, use and maintenance, your unit will provide many years of good and suitable service.

Tools Required

The following hand tool will be needed for proper installation of your new building:

- 12mm, 14mm, and 17mm open end wrenches
- 12mm, 14mm, 17mm sockets or box wrenches
- Large flat head screwdriver
- 2lb maul or sledgehammer
- 4ft level
- 14ft step ladder
- Stake and string for aligning base plates and frame

Assembly Procedure

1. Prepare location and place all unit boxes near location sight. Perform an inventory check before beginning, to be certain all components are available for installation.
2. Secure base plate flanges to base surface.
3. Assemble every group of the arch.
4. Begin frame assembly with front end arch, first interior arch, purlins, etc.
5. Add to assemble other groups of arches.
6. Install main cover over frame.
7. Install end cover over end panels.

Read all the detailed instructions and notices in the following assembly instructions!



Maintenance and Care

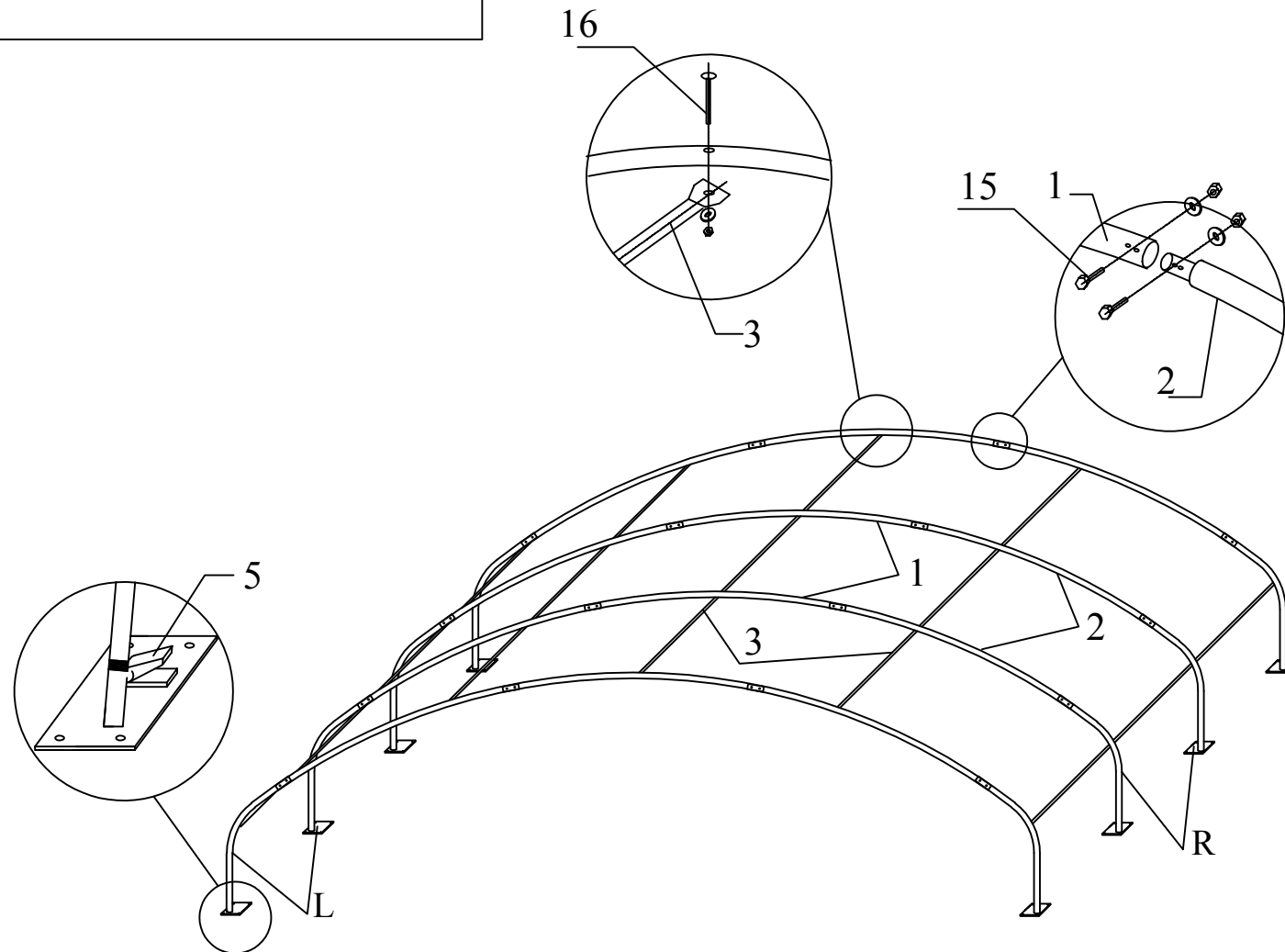
Annually or more often, the unit should be completely inspected internally and externally to make certain the unit remains properly installed and secured. Particular attention should be paid to:

- **Hardware** - check all carriage bolts and hardware connectors to be certain they are in place and tightened.
- **Weather trends** - The unit will strain against the base plate flange under windy conditions, pegs hardware, connection to frame members should be maintained tight and depth of pegs should be checked to be certain they remain deeply and firmly set.
- **Snow Accumulation** - All snow accumulation on the main cover should be removed as soon as possible. Tap the main cover from the inside with a broom or soft brush to clear cover.
- **Main Cover Lacing** - The poly rope that secures the main cover to the bottom rail of the frame assembly should be checked, and adjusted as needed. The tension on the main cover should be uniform from end and side to side. Rope ends must be tied off onto the frame members at the ends on each side.
- **Cleaning** - Cover and doors can be cleaned with a mixture of light detergent and water. A soft bristle brush with the mixture can be used to loosen any hard dirt, mould, or build up on the cover. After cleansing, the cover should be rinsed thoroughly to avoid any chemical reaction from residual detergent. Allowing dirt and debris to sit on cover over an extended time will damage cover irreparably.
- **Severe Weather** - in preparation for inclement weather, completely secure the door of your buildings portable building.



Parts List

Code	PART LIST	Quantity
1	Top roof tube	4
2	Shoulder tube	8
3	Horizontal tube	15
L	Base plate for left side	4
R	Base plate for right side	4
4	Base plate in middle of back panel	2
4A	Base plate in side of back panel	2
5	Ratchet	8
6	Upper vertical tube in back panel	2
7	Upper vertical tube in side of back panel	2
8	Lower vertical tube in back panel	4
9	Middle rails in back panel	1
10	Side rails in back panel	2
11	Tensioning tube for roof cover	4+2
12	Tensioning tube for back panel	2+1
13	Clip	8
14	Stake peg	8
15	Hexagon bolt M8*60	58
16	Carriage bolt M8*65	24
17	Hexagon bolt M10*40	8
18	Hexagon bolt M10*60	6
	Hexagon bolt M10*60	6
19	Hexagon bolt M8*70	8
20	Plastic cap	6
21	Roof cover	1
22	Cover for back panel	1
23	Band for ratchet	8
24	Rope for cover installation	7
25	L shape metal for corners	4



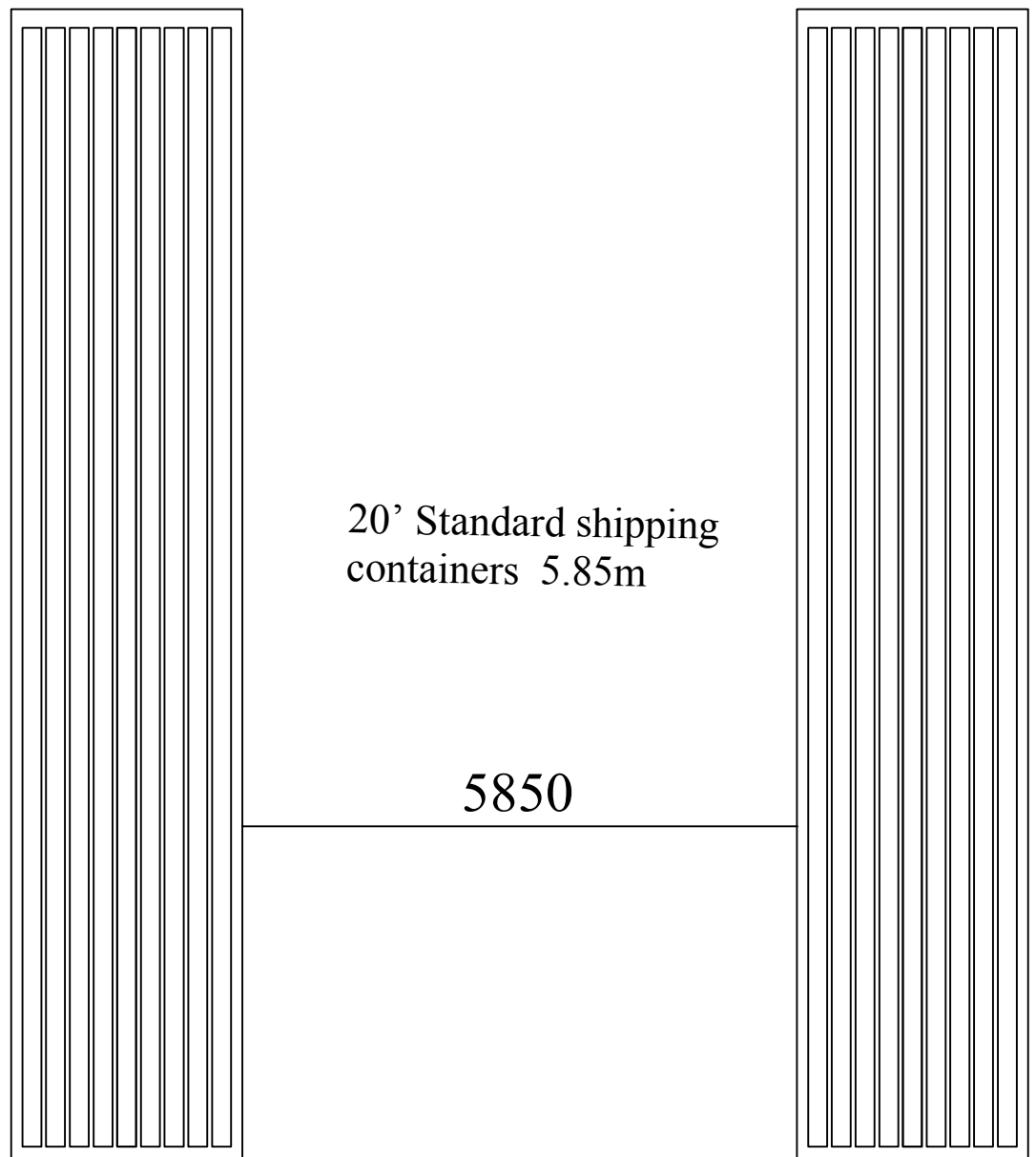
20' Container Shelter
L6.05*W6.1*H1.8m



STEP 1

Container Positioning

1. Ensure the site is level and firm.
2. Place the containers 5.85m apart.



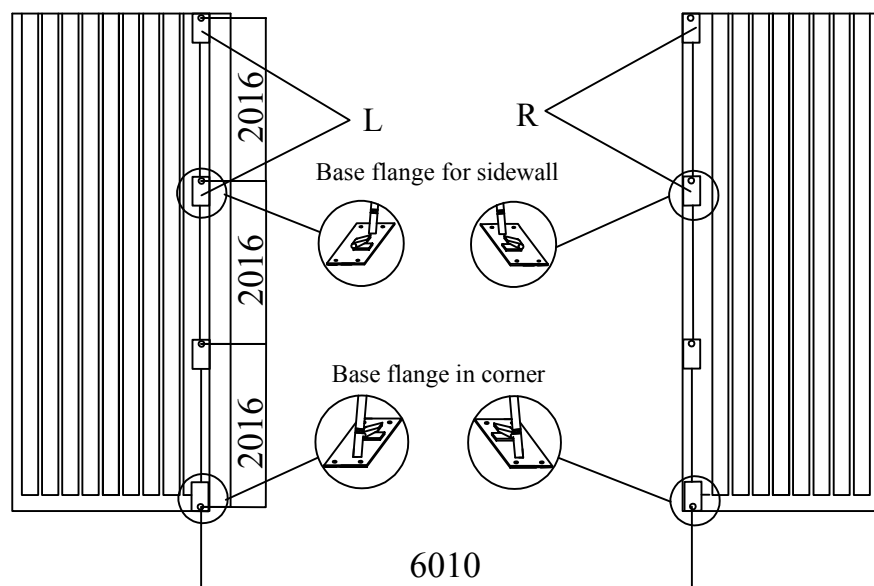
STEP 2

BASE PLATE LATOUT & SECURING

1. Secure base plates to the container tops, ensuring that the centre portal to centre portal measurement is 6.05m.

For 20'L Container shelter, the distance between every two adjoining spigots at each side is 2.016M.

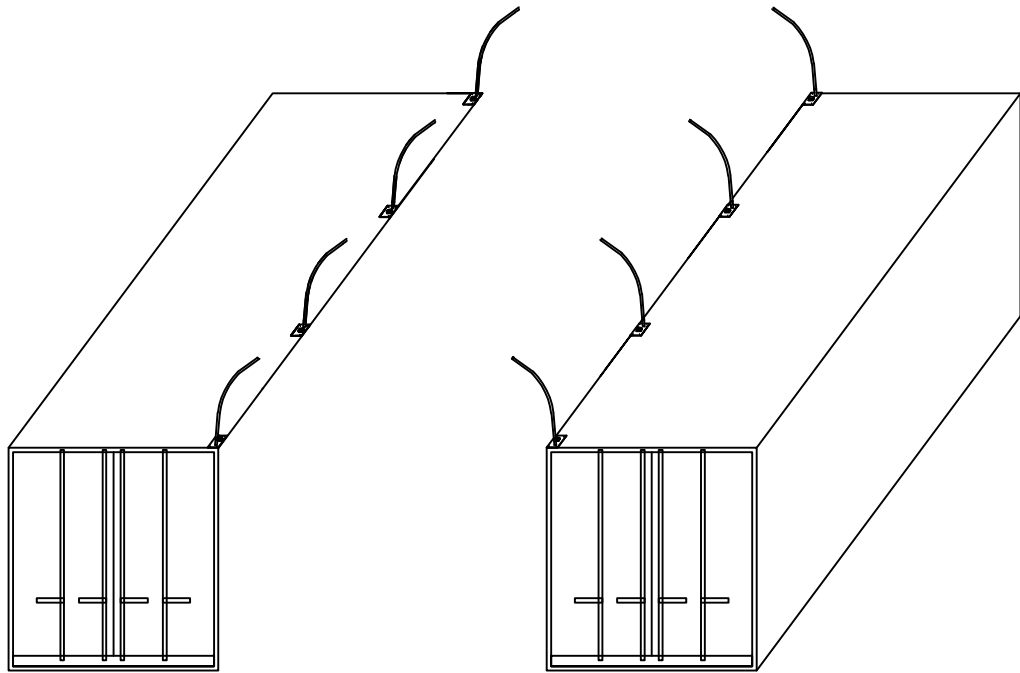
2. Weld the Base Plates to the container tops (the welding can through the 4 holes on each base plate).



centre portal to centre portal

NOTE:

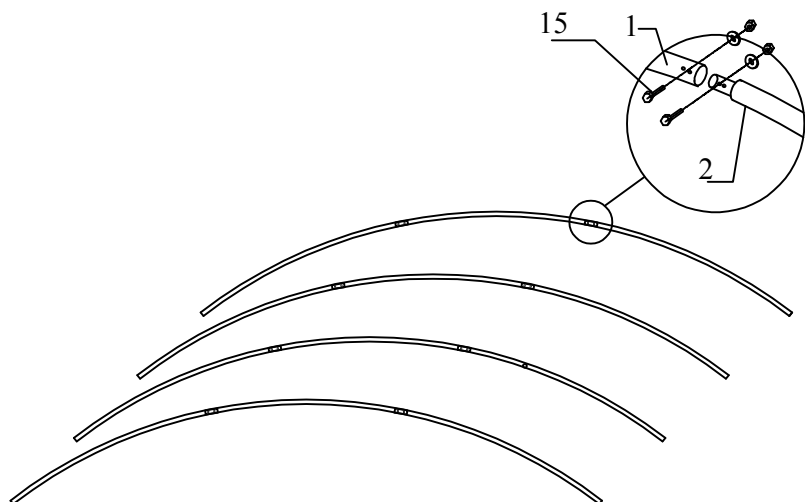
When installing, anchor the base plates to the tops of the containers securely first. Do not attempt to assemble the rest of the frame into unsecured base plates.



STEP 3

FRAME ASSEMBLY

1. Assembly ALL portals on the ground first.
2. Assembly parts #1 & 2 and bolt portal legs together using part #15.

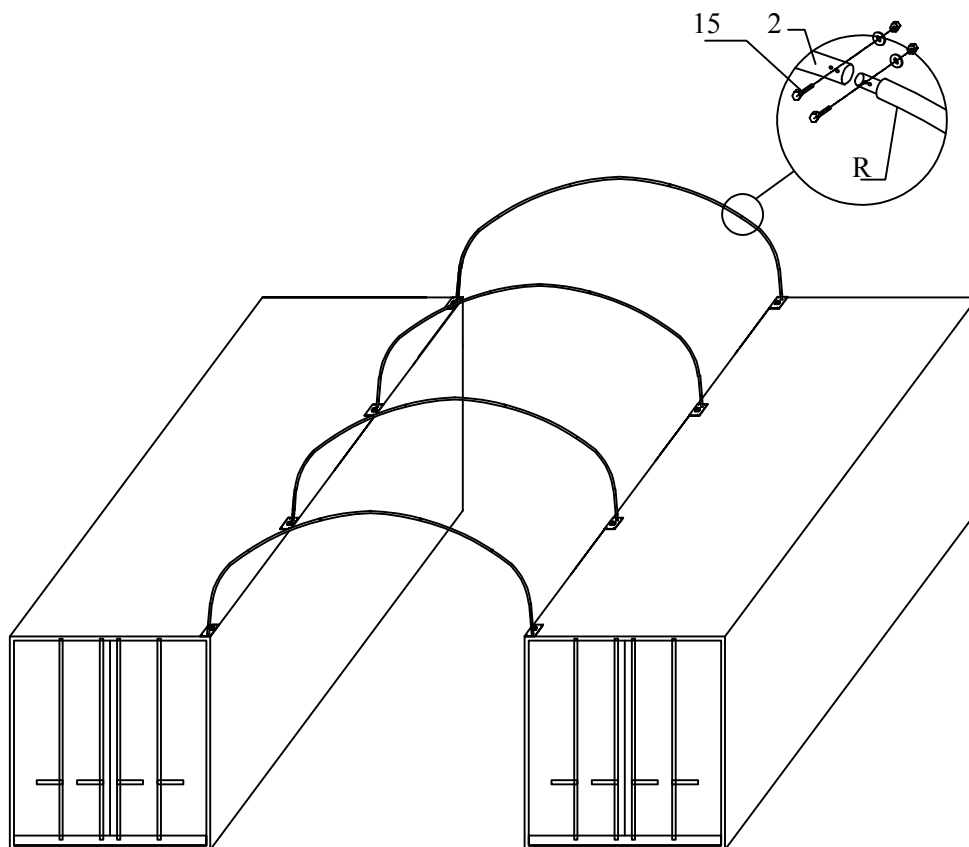




STEP 4

FRAME ASSEMBLY Continued

1. Secure each portal into the spigots of the base plates.
-first secure one side, then ease in the other side to fit onto the spigot of the opposite side.
2. Bolt in position using part # 15.



NOTE:

Do not attempt to attempt to assemble the entire frame including the horizontal connections on the ground and lift into place.

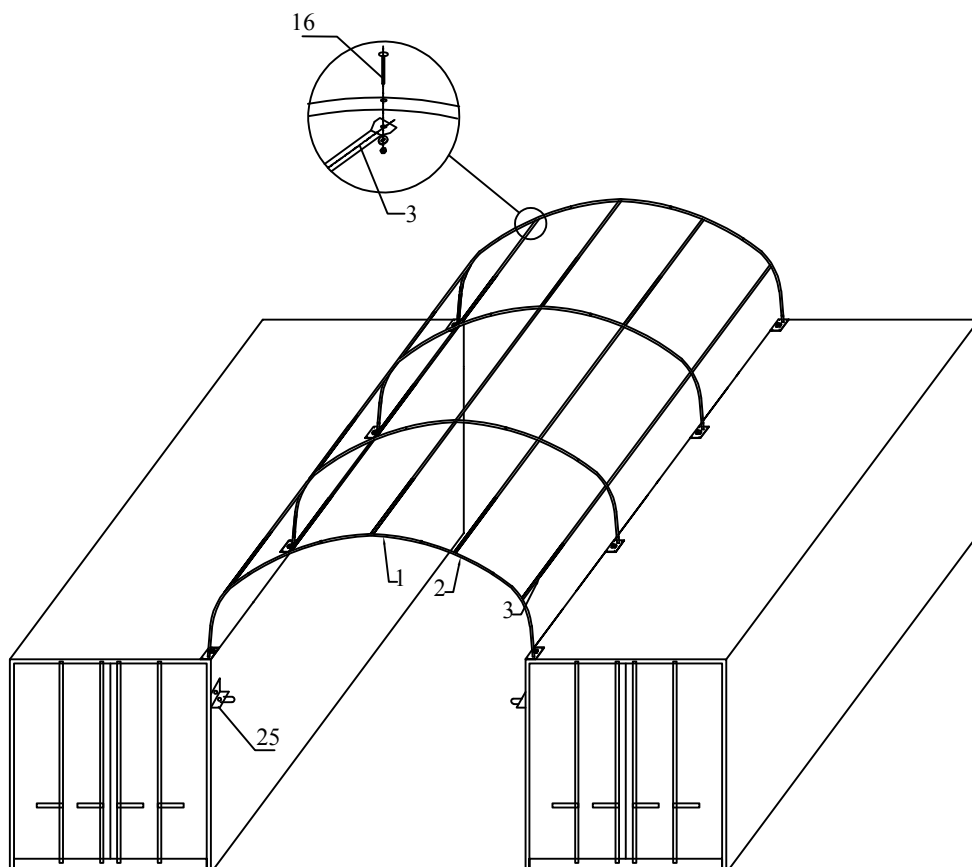


STEP 5

FRAME ASSEMBLY Continued

Connect all the portals after they have been lifted up and secured into the base plates, using Horizontal Tubing part #3 and bolts part #16.

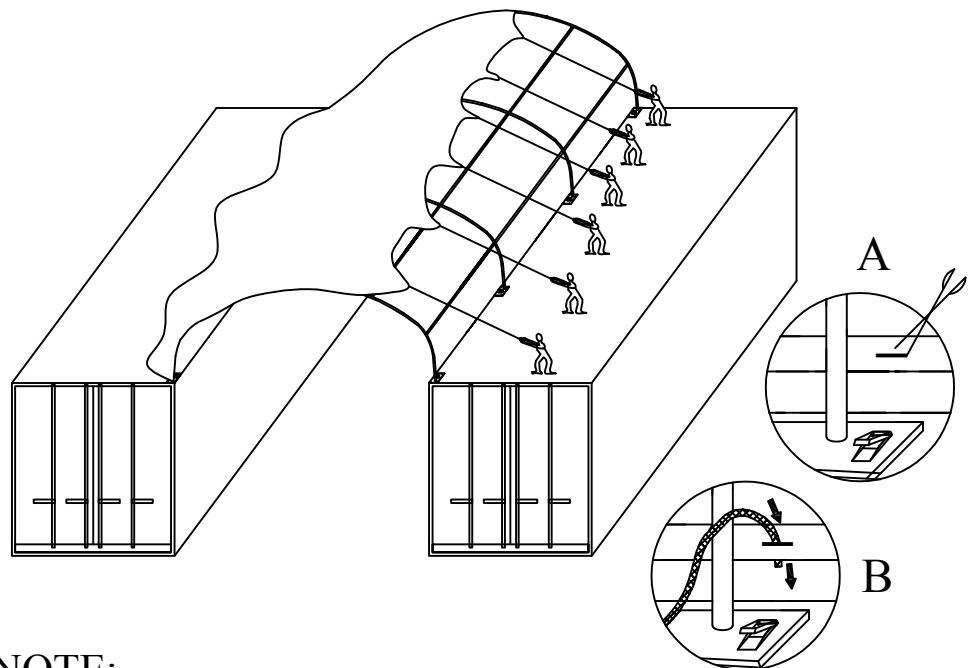
Weld four Small "L" Flange part#25 below the four end base plates on containers. They are about 30cm-40cm below the containers top.





STEP 6 COVER INSTALLATION

1. Slide the cover over the frame from one side to the other, not end to end.
2. Tension the ends FIRST by pulling and tensioning the ends of the cover using the nylon rope already threaded through the cover. Tension evenly at both ends and tie off temporarily.
3. Insert cover tensioning tube part #4 into the sleeves of the cover.
4. Push tube to very end of sleeve. Feed tube back into sleeve end (centre the tube in sleeve.)
5. Cut opening for nylon strap on sleeves, as drawing A. CAUTION do not cut through cover.
6. Insert nylon strap over tube. Feed ends into tie down ratchet as drawing B. Do not fully tension.



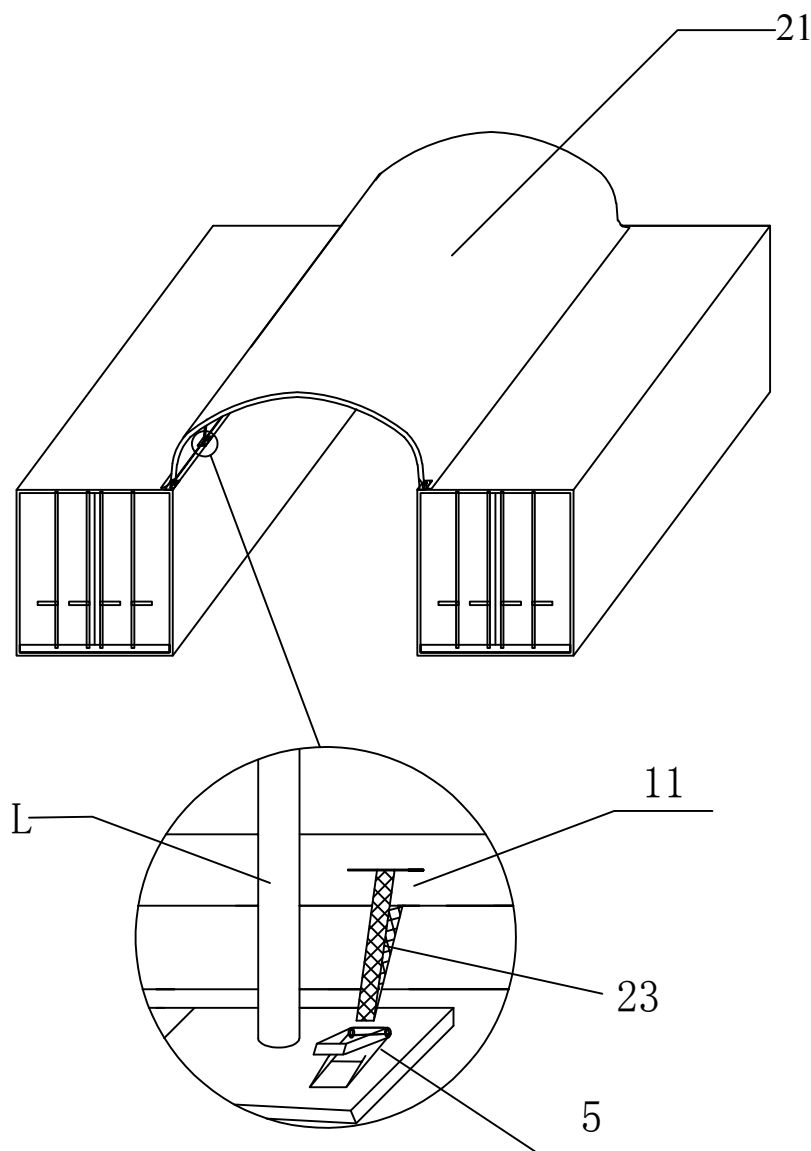
NOTE:

Ensure the cover is the right way around and have an even amount of cover overhanging at both ends of the frame. Sleeves are on the underside and are on the sides of the cover only. Then ends of the shelter has nylon tension rope already threaded through as well as eyelets.

STEP 7

COVER INSTALLATION Continued

1. Lace cover to end portals through eyelets then fully tension.
2. Fully tension tie down evenly on each side.
3. Tension the nylon ropes again and tie them off to the 4 small “L” flanges.
4. Double check all knots are secure and cover is well tensioned and stretched onto frame.



Now, you have finish the installation.

Recheck if every bolts have been bolted tightly and if cover has been tensioned well.

Please keep in mind, check your cover and steel frame regularly, to make sure all parts are firm and work well.

